



# Beaufort County Public Works Stormwater Infrastructure Project Summary

**Project Summary:** Murray Drive

**Activity:** Routine/Preventive Maintenance

**Narrative Description of Project:**

Project improved 160 L.F. of drainage system. Cleaned out (4) catch basins and 136 L.F. of channel. Jetted (2) crossline pipes and 24 L.F. of channel pipe.

**Completion:** Apr-13

2013-681 / Murray Drive	Labor Hours	Labor Cost	Equipment Cost	Material Cost	Contractor Cost	Indirect Labor	Total Cost
AUDIT / Audit Project	0.5	\$10.45	\$0.00	\$0.00	\$0.00	\$6.62	\$17.06
CBCO / Catch basin - clean out	20.0	\$472.30	\$221.60	\$109.03	\$0.00	\$324.70	\$1,127.63
HAUL / Hauling	6.0	\$131.10	\$64.20	\$13.48	\$0.00	\$86.52	\$295.30
RSDCL / Roadside Ditch - Cleanout	15.0	\$338.10	\$81.22	\$17.06	\$0.00	\$225.90	\$662.28
UTLOC / Utility locates	2.0	\$41.78	\$0.00	\$0.00	\$0.00	\$26.46	\$68.24
<b>2013-681 / Murray Drive</b>	<b>43.5</b>	<b>\$993.73</b>	<b>\$367.02</b>	<b>\$139.57</b>	<b>\$0.00</b>	<b>\$670.19</b>	<b>\$2,170.51</b>
<b>Grand Total</b>	<b>43.5</b>	<b>\$993.73</b>	<b>\$367.02</b>	<b>\$139.57</b>	<b>\$0.00</b>	<b>\$670.19</b>	<b>\$2,170.51</b>

Before



During



After



**Project: Murray Drive**

**Activity: Routine/  
Preventive  
Maintenance**

**Project #:  
2013-681**

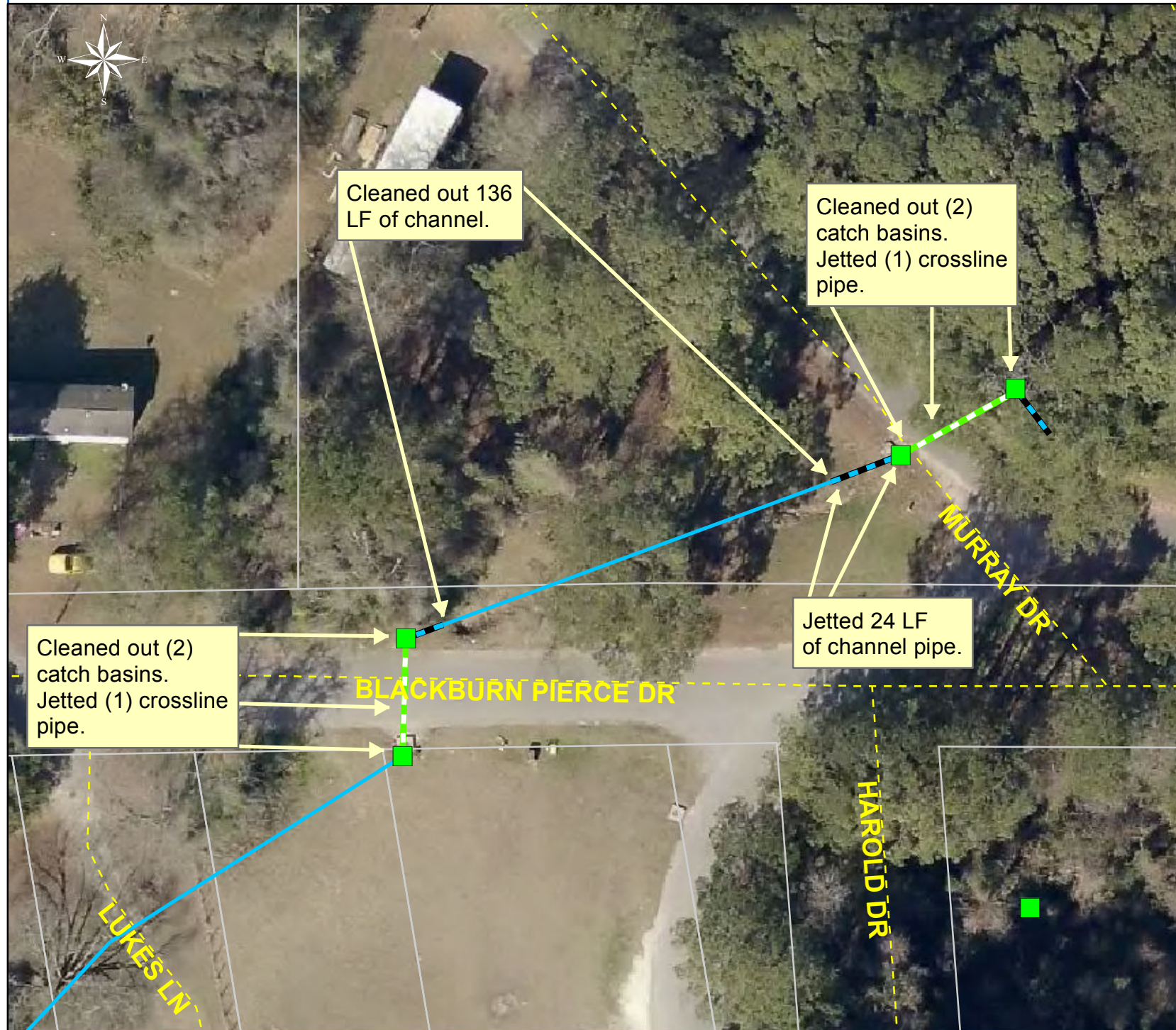
**Township: Port  
Royal Island**

**Completed:  
April 2013**

**Legend**

**TYPE**

- River
- Creek/Stream
- River/Creek/Marsh BANK
- Channel (fka Outfall)
- Channel Pipe
- Lateral
- Lateral Pipe
- Roadside
- Roadside Pipe
- Road Pipe
- Crossline Pipe
- Driveway Pipe
- Access Pipe
- Bleeder Pipe



1 inch = 42 feet